

Exhibit-12

Organizational & Managerial Capability.

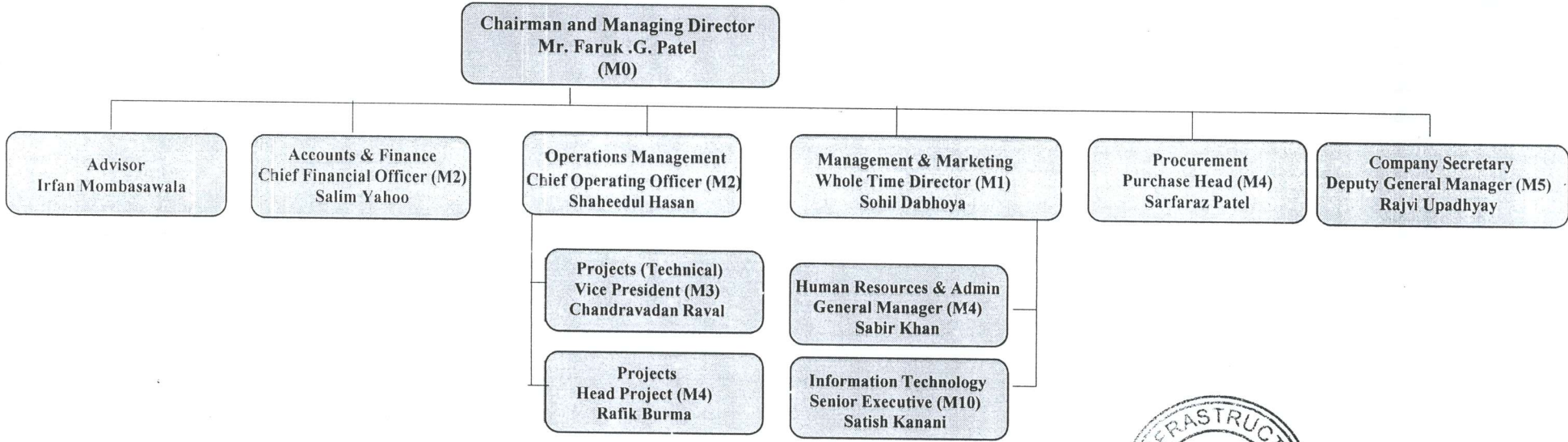
Brief Background of Directors

The brief particulars of the Directors, as provided by the Company, are mentioned below:

Name of Directors	Designation	Experience
Mr. Faruk Patel	Chairman & MD	He started business operations in 1994 as logistic service provider with owned & hired fleet. The K P group is comprising of seven companies with state-of-the-art fabrication and hot-dip galvanization facilities having in-house design team for Telecom Towers / Masts / poles, HT Transmission Towers, Mounting Structures for Solar Modules and other complex structures. He has an experience of around 18 years. He has been awarded as 'Legends of Surat 2018' by Gujaratmitra and was recently felicitated by the Gujarat State Energy Minister Mr. Saurabh Patel as "The Leaders", in the field of Renewable Energy, organized by a media company for the state of Gujarat.
Mr. Sohil Dabhoya	Director	He is MBA from Sikkim Manipal University. He is associated with the K P Group since more than 12 years. He has worked with marketing, HR, operations & execution departments of KPI group. He has held various senior positions of Business Development Officer, Public Relation Officer, Sr. Vice President
Mr. Shaheedul Hasan	Chief Operating Office (KPI Global-Parent Company)	He is with KP Group as Chief Operating Officer since 2012. He has done BE in Electronics from Aligarh Muslim University (AMU). He started his career with Space Applications Center (SAC), Indian Space Research Organization – ISRO as R & D Scientist and thereafter switched over to telecom sector. He has 26 years of experience in complete life cycle of a telecom network. He has been associated with major telecom companies, viz., Fascal Ltd (now Vodafone), Siemens, Tata, Airtel, Aircel and RCOM at State leadership positions. His last telecom assignment was with RCOM as Vice President & CTO of Bihar Telecom Circle.
Mr. Salim Yahoo	CFO (KPI Global-Parent Company)	He holds the management diploma from Symbiosis center for distance learning. He was previously working with CRISIL Limited as director – Rating MCG from 2008 to 2018. He has overall experience of 22 years in finance and accounting field.

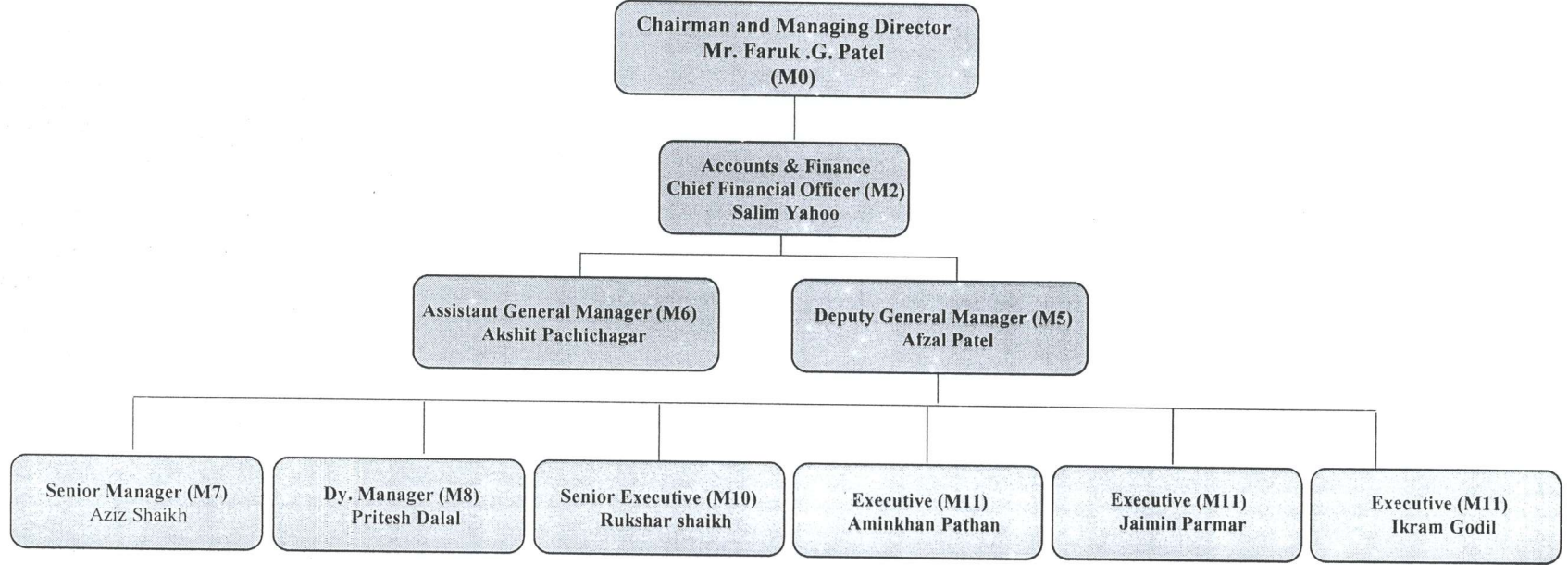


K.P.I Global Infrastructure Ltd.



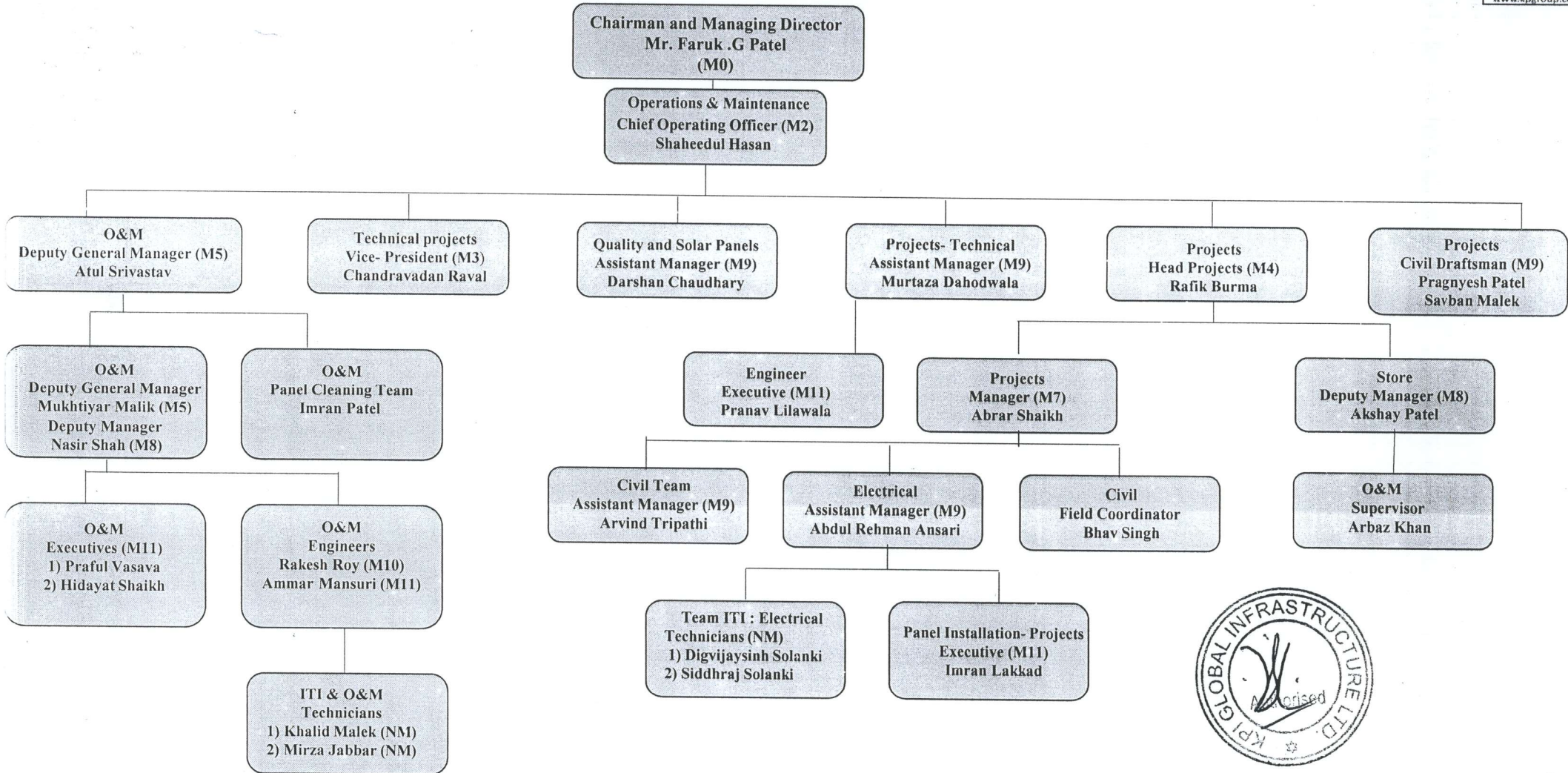


K.P.I Global Infrastructure



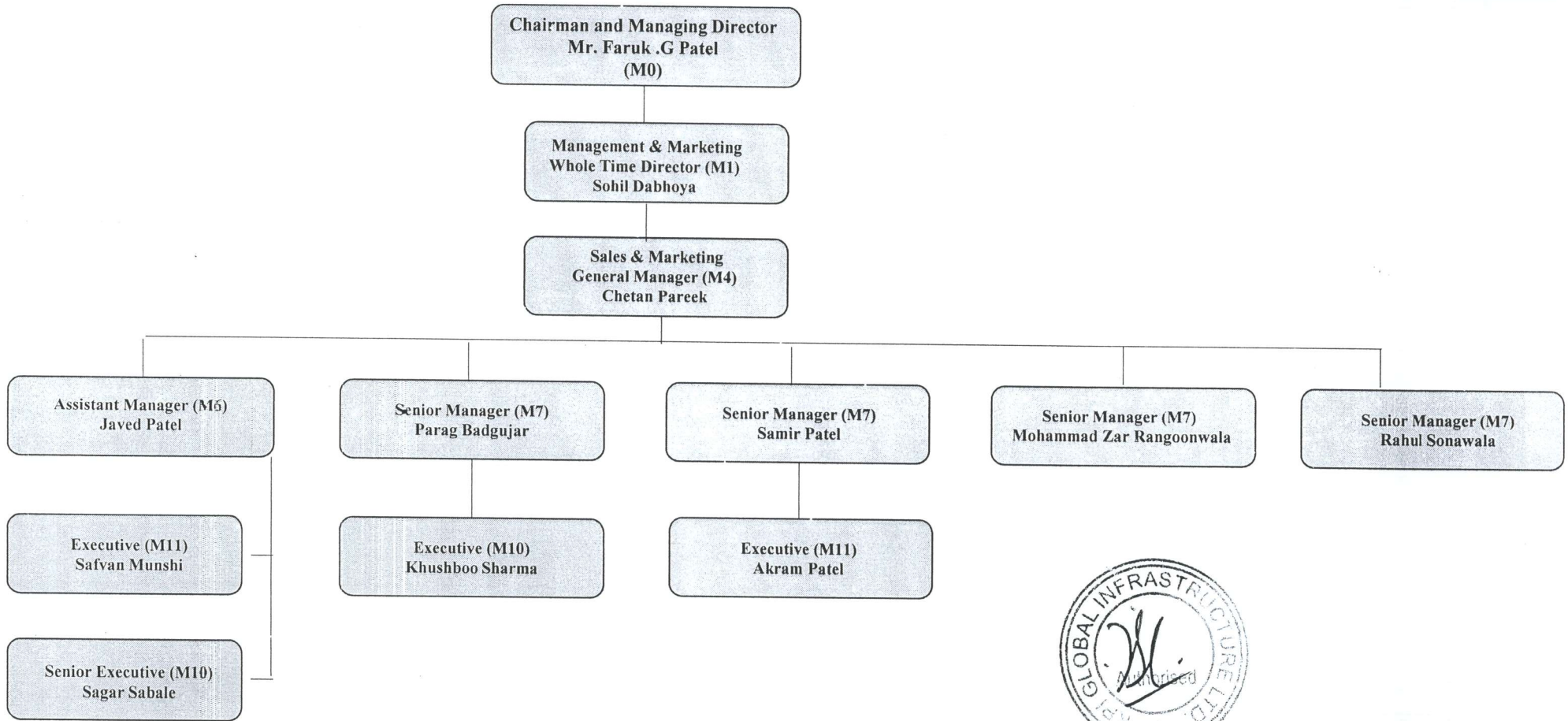


K.P.I Global Infrastructure





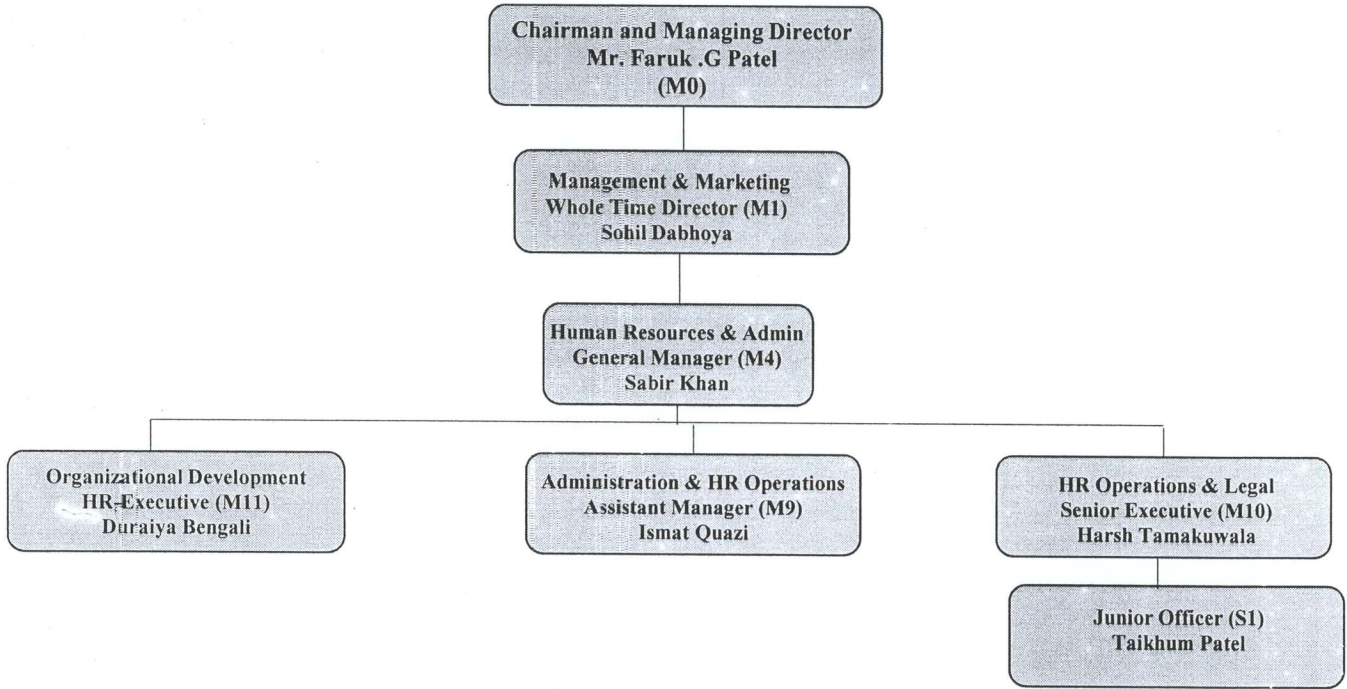
K.P.I Global Infrastructure Ltd.



324

Organizational Structure
Updated Date: 27-01-2021
KPG- Human Resources & Admin Team

KPI Global Infrastructure



Organizational Structure
Updated Date: 27-01-2021
KPG- IT Team

K.P.I Global Infrastructure

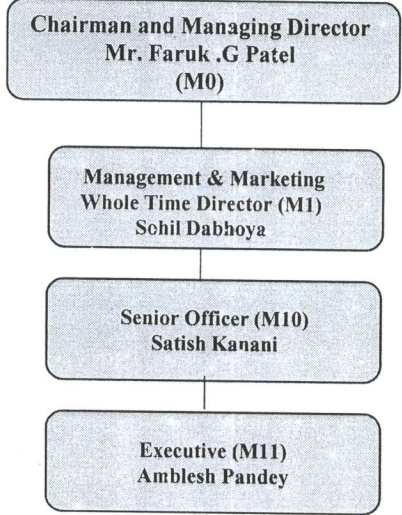


Exhibit-13

Approach &

Methodology.

K.P.I. GLOBAL INFRASTRUCTURE LIMITED

CIN: L40102GJ2008PLC083302



APPROACH & METHODOLOGY FOR ESTABLISHMENT OF THE POWER TRADING ARRANGEMENT

GROUND

KPI Infrastructure Ltd (KPI) is an established Solar Power Developer and have developed more than 10 solar power plant (the project name is Solarism) at Vill: Sudi, Ta: Amod in Bharuch District under Third party option through bilateral PPA. KPI is either selling the solar power to 3rd Party by getting into bilateral

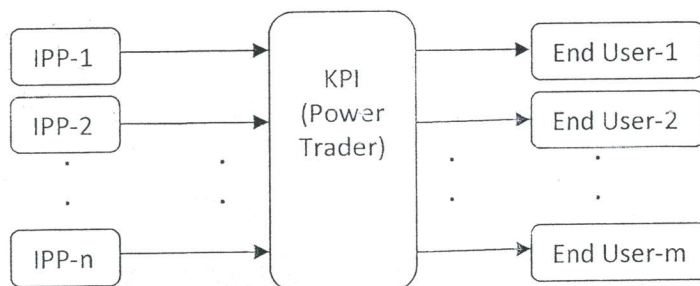
Announcement of latest Gujarat Solar Power Policy 2021 giving several incentives, there are small investors who invest as IPP in solar starting from as low capacity as 500KWp under 3rd party option. KPI, being an established company having all the technical and regulatory knowhow and selling solar power since last more than 10 years, is well placed to help such small investors by purchasing power from them and selling it to the end user through bilateral PPAs.

The Solar Policy encourages use of common evacuation facilities by adjoining developers as envisaged in the Solar Policy 2021 whose Clause No. 20.3 'Evacuation Facilities', states that:

optimize costs, Common dedicated transmission line shall be encouraged for cluster of adjoining developers with appropriate metering at their respective end of project as well as a common meter for such cluster at the receiving end at CTU Interface/ STU substation/ 11 kV system of DisCom. Energy injection by each SPG at the receiving end shall be worked out on the basis of meter reading of common meter and appropriately apportioned as per the respective meter reading at the sending end meter of that SPG by DisCom."

APPROACH & METHODOLOGY

The approach & methodology adopted is illustrated in the below schematic diagram:



K.P.I. GLOBAL INFRASTRUCTURE LIMITED

CIN: L40102GJ2008PLC083302



Here,

- IPP-n : is an Independent Power Producer (Generator)
- KPI : is Power Trader
- End User-m : is the End consumer of the power

IPP shall sign Power Sale Agreement with KPI (The Power Trader) while End User shall sign Power Purchase Agreement (PPA) with KPI (The Power Trader).



SOLARISM

TM

The Power of Nature

KPI GLOBAL INFRASTRUCTURE LIMITED
FIVE YEARS SALES PLANING OF POWER IN TERMS OF UNITS

FINANCIAL YEARS	2021-22	2022-23	2023-24	2024-25	2025-26
SOLAR IN TERM OF MW - CUMMULATIVE		30	40	50	60
	20	50	90	140	200
	1550000	1550000	1550000	1550000	1550000
Total units	31000000	77500000	139500000	217000000	310000000
Mus per Annum	31.00	77.50	139.50	217.00	310.00

